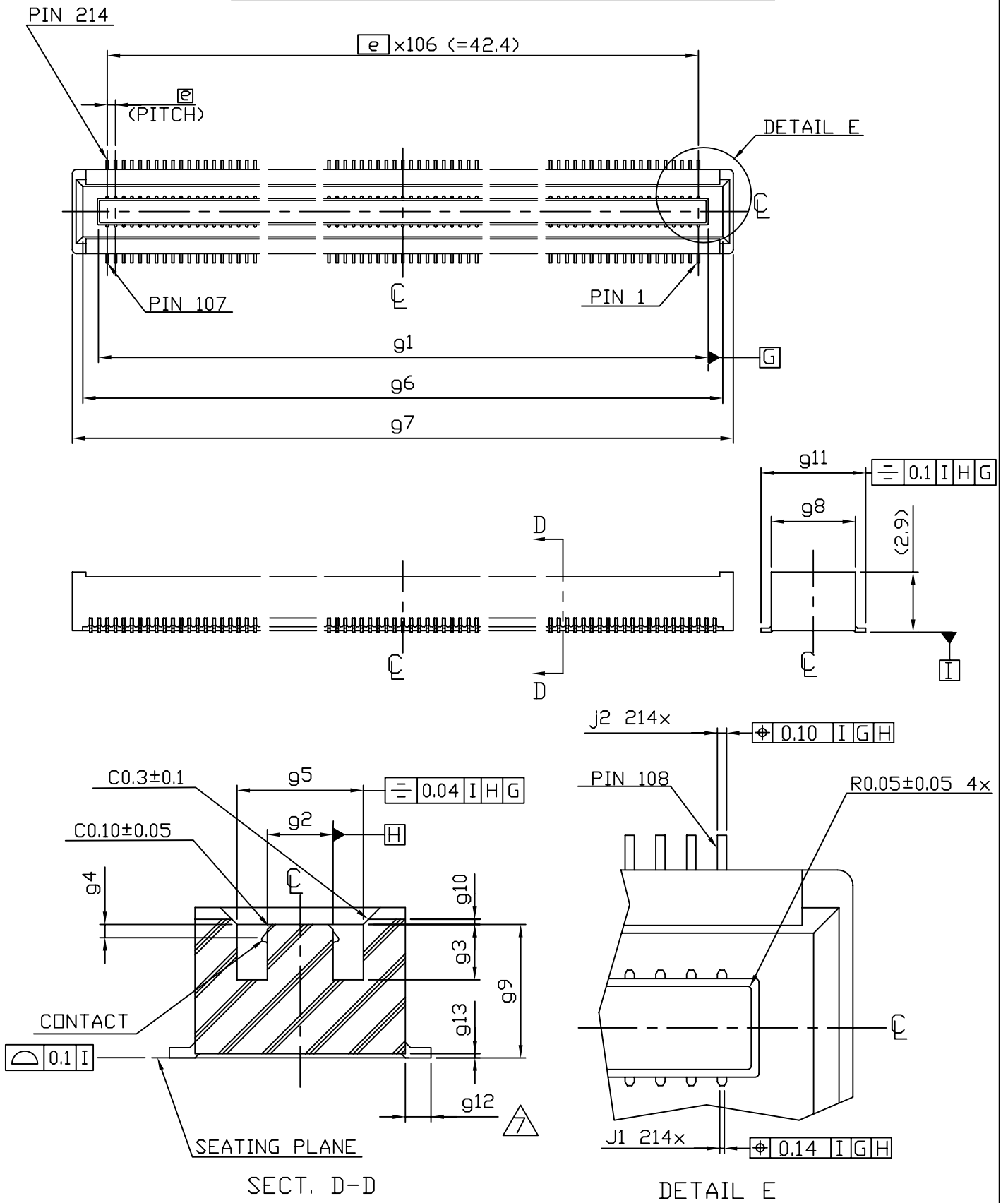




# RECEPTACLE CONNECTOR (FOR SYSTEM)



JEDEC  
SOLID STATE PRODUCT  
OUTLINE

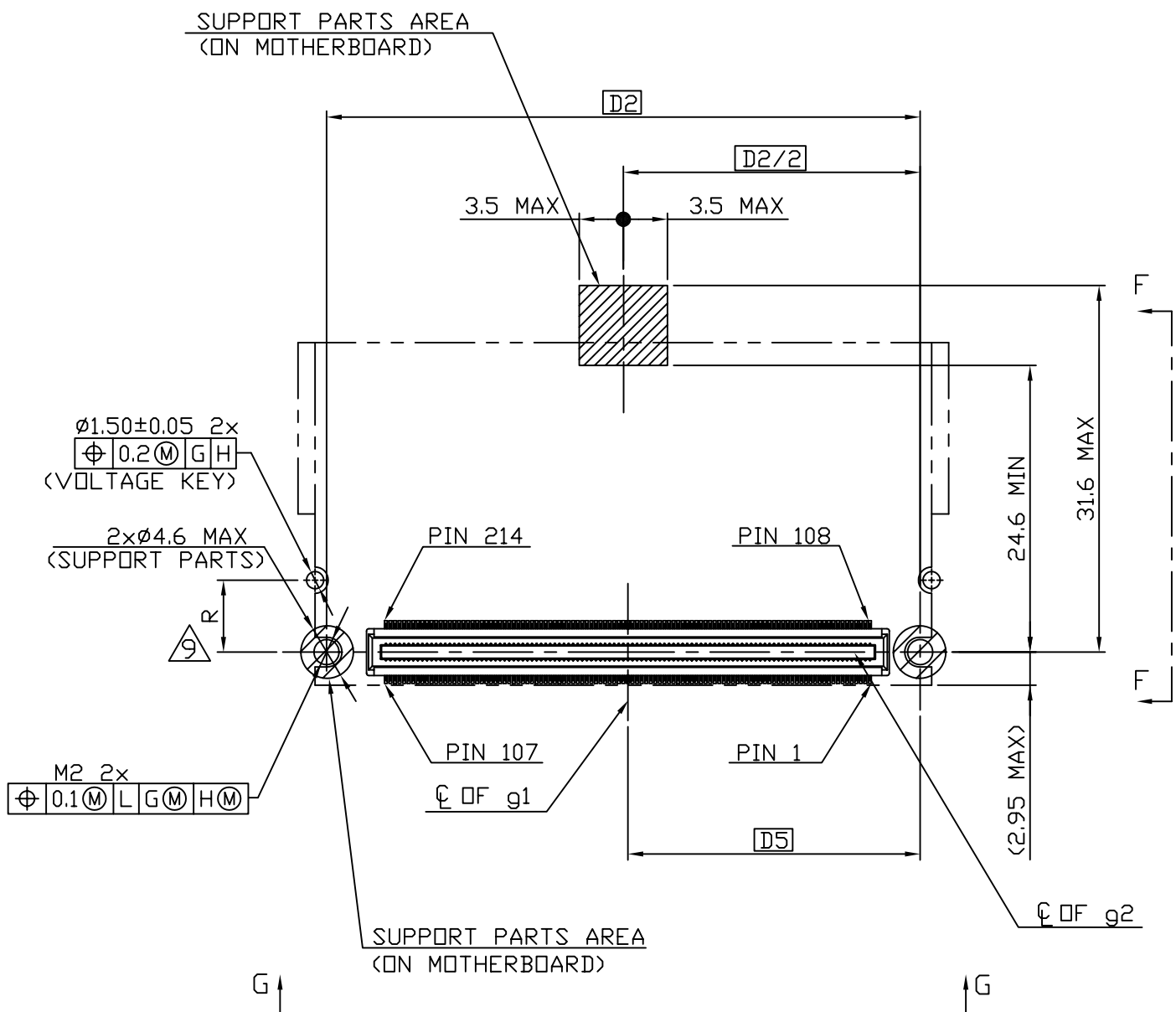
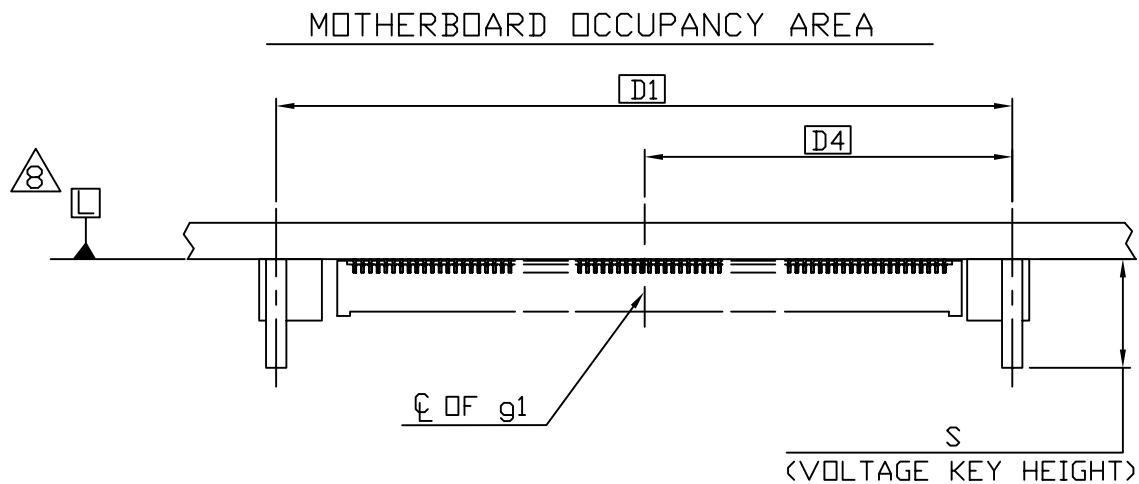
TITLE CONNECTOR OUTLINE FOR  
DDR AND DDR2 MICRO DIMM  
MEZZANINE 214PIN  
0.4mm LEAD CENTERS

ISSUE  
A

DATE  
05/05

ITEM  
SO-004

SHEET  
2 OF 10



JEDEC  
SOLID STATE PRODUCT  
OUTLINE

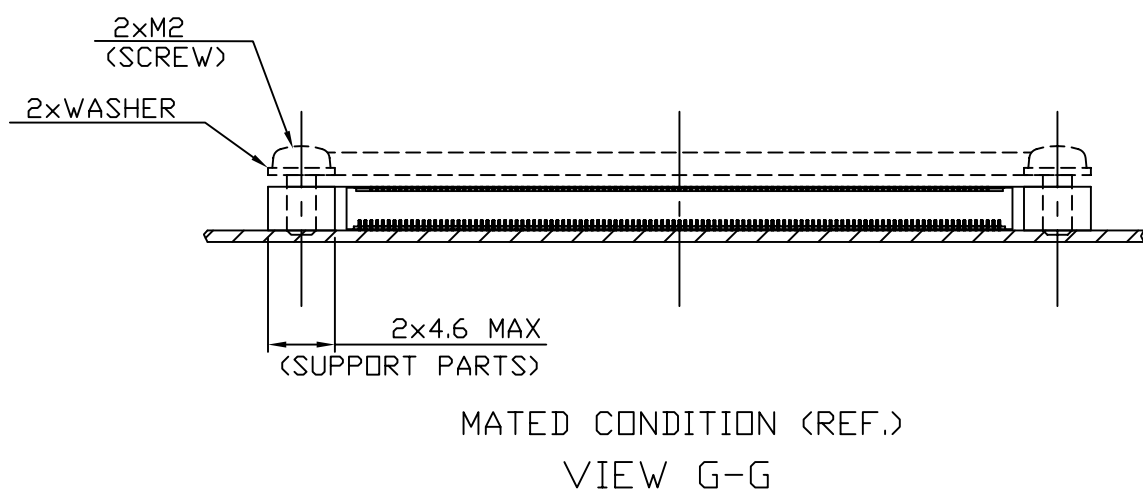
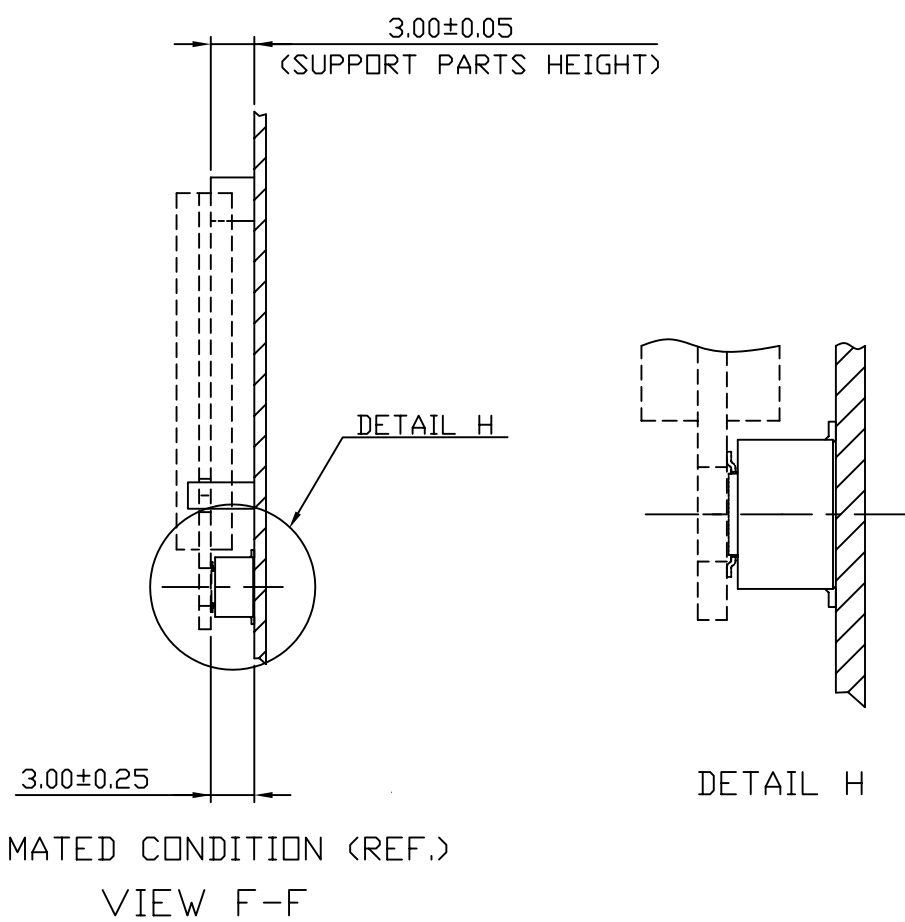
TITLE CONNECTOR OUTLINE FOR  
DDR AND DDR2 MICRO DIMM  
MEZZANINE 214PIN  
0.4mm LEAD CENTERS

ISSUE  
A

DATE  
05/05

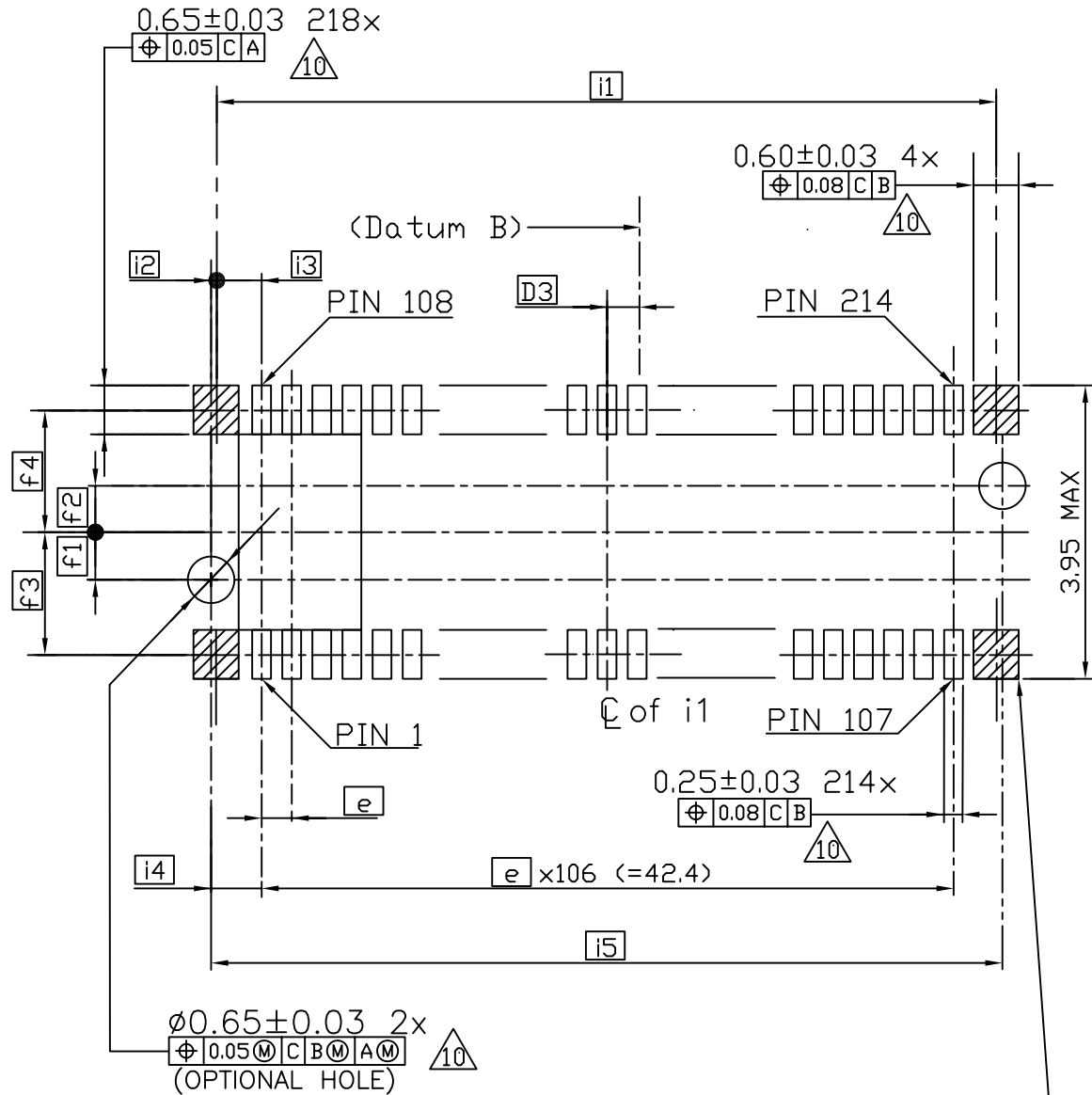
ITEM  
SO-004

SHEET  
3 OF 10

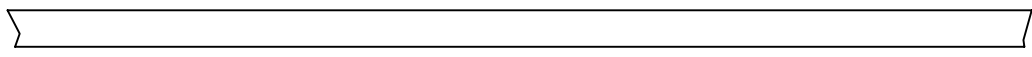


JEDEC SOLID STATE PRODUCT OUTLINE	TITLE CONNECTOR OUTLINE FOR DDR AND DDR2 MICRO DIMM MEZZANINE 214PIN 0.4mm LEAD CENTERS	ISSUE  A	DATE  05/05	ITEM  SO-004	SHEET  4 OF 10
---	--	----------------	-------------------	--------------------	----------------------

SUGGESTED P.C.B. DIMENSION  
(LAND PATTERN FOR PLUG CONNECTOR)



SOLDER PLATE PAD AREA (4 POSITION)  
(NOT FOR ELECTRICAL CONNECTION)



C 8

JEDEC SOLID STATE PRODUCT OUTLINE	TITLE CONNECTOR OUTLINE FOR DDR AND DDR2 MICRO DIMM MEZZANINE 214PIN 0.4mm LEAD CENTERS	ISSUE A	DATE 05/05	ITEM SO-004	SHEET 5 OF 10
---	---	------------	---------------	----------------	------------------

This mechanical drawing shows a 20-pin connector with the following specifications:

- Dimensions:**
  - $m1$ : Overall length
  - $m2$ : Pin 1 to center of crosshatched area
  - $m3$ : Pin 1 to center of optional hole
  - $m4$ : Pin 1 to center of crosshatched area
  - $m5$ : Pin 1 to center of optional hole
  - $p1$ : Overall width
  - $p2$ : Width of crosshatched area
  - $p2/2$ : Half width of crosshatched area
  - $e$ : Pin pitch
- Pin Specifications:**
  - PIN 214:**  $0.60 \pm 0.03$  4x  $\phi 0.08$  L K
  - PIN 108:**  $0.90 \pm 0.03$  218x  $\phi 0.05$  L J
  - PIN 107:**  $0.25 \pm 0.03$  214x  $\phi 0.08$  L K
  - PIN 1:**  $\phi 0.65 \pm 0.03$  2x  $\phi 0.05$  (M) L K (M) J (M) (OPTIONAL HOLE)
- Other Features:**
  - METAL PROHIBITED CROSSHATCHED AREAS:** Indicated by crosshatched patterns.
  - SOLDER PLATE PAD AREA (4 POSITIONS):** Indicated by crosshatched patterns.
  - NOT FOR ELECTRICAL CONNECTION:** Note for the solder plate pad area.

JEDEC SOLID STATE PRODUCT OUTLINE	TITLE CONNECTOR OUTLINE FOR DDR AND DDR2 MICRO DIMM MEZZANINE 214PIN 0.4mm LEAD CENTERS	ISSUE  A	DATE  05/05	ITEM  SO-004	SHEET  6 OF 10
---	---	----------------	-------------------	--------------------	----------------------

	COMMON DIMMENSIONS			NOTES
SYMBOL	MIN	NOM	MAX	
e	0.40 BSC			
h1	43.36	43.38	43.40	
h2	1.28	1.30	1.32	
h3	1.04	——	1.08	
h4	——	——	0.20	
h5	——	——	2.47	
h6	——	——	44.73	
h7	1.38	1.46	1.54	
h8	3.35	3.45	3.55	
h9	0.19	0.25	0.31	
h10	0.01	——	0.15	
k1	0.24	0.26	0.28	
k2	0.11	0.14	0.17	
g1	43.32	43.34	43.36	
g2	1.24	1.26	1.28	
g3	1.08	——	——	
g4	——	——	0.34	
g5	2.47	——	——	
g6	44.74	——	——	
g7	——	——	45.90	
g8	——	——	4.20	
g9	2.48	2.60	2.72	
g10	——	——	0.13	
g11	5.0	5.1	5.2	
g12	0.45	0.50	0.55	
g13	0.01	——	0.15	
j1	0.05	0.08	0.11	
j2	0.10	0.12	0.14	
S	4.7	——	5.3	
D1	54.0 BSC			
D2	52.0 BSC			
D3	0.4 BSC			
D4	26.6 BSC			
D5	25.6 BSC			

JEDEC SOLID STATE PRODUCT OUTLINE	TITLE CONNECTOR OUTLINE FOR DDR AND DDR2 MICRO DIMM MEZZANINE 214PIN 0.4mm LEAD CENTERS	ISSUE  A	DATE  05/05	ITEM  SO-004	SHEET  7 OF 10

	COMMON DIMMENSIONS			NOTES
SYMBOL	MIN	NOM	MAX	
f1	0.625	BSC		
f2	0.625	BSC		
f3	1.625	BSC		
f4	1.625	BSC		
i1	43.60	BSC		
i2	0.075	BSC		
i3	0.6	BSC		
i4	0.675	BSC		
i5	43.75	BSC		
p1	4.6	BSC		
p2	1.25	BSC		
m1	43.60	BSC		
m2	0.075	BSC		
m3	0.6	BSC		
m4	0.675	BSC		
m5	43.75	BSC		
NOTES	1,2,3,4,5,6,7,8,9 and 10			
REF	14-076			
ISSUE	A			

JEDEC SOLID STATE PRODUCT OUTLINE	TITLE CONNECTOR OUTLINE FOR DDR AND DDR2 MICRO DIMM MEZZANINE 214PIN 0.4mm LEAD CENTERS	ISSUE  A	DATE  05/05	ITEM  SO-004	SHEET  8 OF 10
---	--	----------------	-------------------	--------------------	----------------------

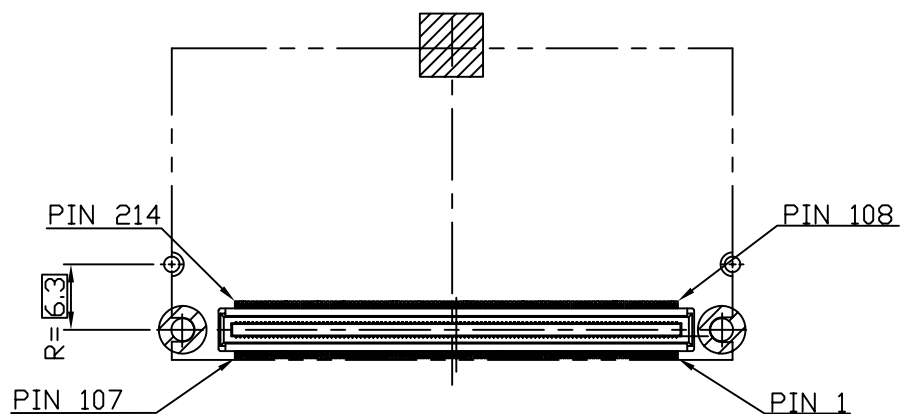


MECHANICAL KEYING  
 (VIEW FROM CONNECTOR SIDE ON A MOTHERBOARD)

POWER SUPPLY  
 (SYSTEM)

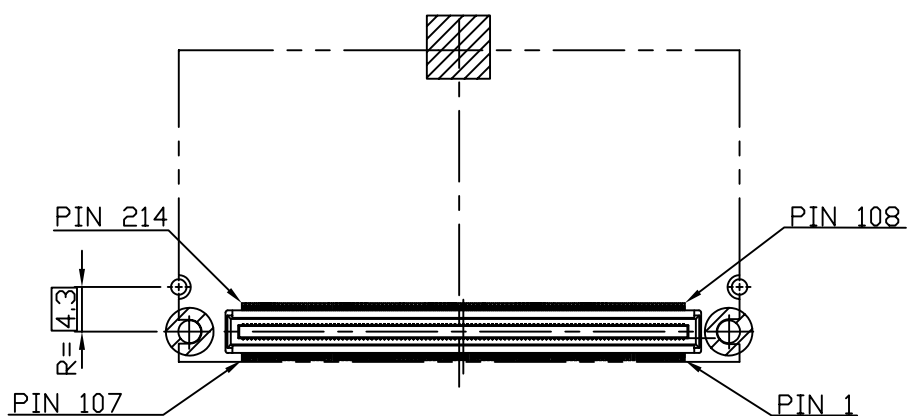
5

2.5V, 2.6V  
 (DDR)



5

1.8V  
 (DDR2)



JEDEC  
 SOLID STATE PRODUCT  
 OUTLINE

TITLE CONNECTOR OUTLINE FOR  
 DDR AND DDR2 MICRO DIMM  
 MEZZANINE 214PIN  
 0.4mm LEAD CENTERS

ISSUE  
 A

DATE  
 05/05

ITEM  
 SO-004

SHEET  
 9 OF 10

NOTE:

1. DIMENSIONING AND TOLERANCING CONFORM TO ASME Y14.5M-1994.
2. TOLERANCES ON ALL DIMENSIONS  $\pm 0.15\text{mm}$  UNLESS OTHERWISE SPECIFIED.
3. ALL DIMENSIONS AND TOLERANCES ARE IN mm.
4. REFER TO MD-260 FOR MODULE OUTLINE

5. THE JC-45 COMMITTEE CONTROLS THIS INFORMATION.  
THIS COLUMN IS SHOWN HERE FOR REFERENCE ONLY,  
AND IS SUBJECT TO CHANGE.

6. "h2" DIMENSION APPLIES AT THE BOTTOM OF CONTACT.  
TOP PORTION OF CONTACT HOUSING, EXCEPT OF HOUSING  
CORNER AND SIDE HOUSING OF LONGITUDINAL DIRECTION,  
IS ALLOWED TO INCLINE TOWARDS INSIDE WITHIN 0.05mm  
MAXIMUM.

7. THIS DIMENSION SHOWS A LENGTH THAT TOUCHES P.C.B PAD SURFACE.

8. THIS DATUM PLANE IS THE CONNECTOR MOUNTED SIDE OF PCB.

9. THE DIMENSION FROM VOLTAGE KEY CENTER TO SUPPORT PARTS  
CENTER IS DEFINED ON PAGE 9.

10. THE POSITION OF DATUM A,B,C IS DEFINED MD-260.

JEDEC SOLID STATE PRODUCT OUTLINE	TITLE CONNECTOR OUTLINE FOR DDR AND DDR2 MICRO DIMM MEZZANINE 214PIN 0.4mm LEAD CENTERS	ISSUE  A	DATE  05/05	ITEM  SO-004	SHEET  10 OF 10
---	---	----------------	-------------------	--------------------	-----------------------